

\$939,900 - 2417 22 Street Nw, Calgary

MLS® #A2228522

\$939,900

4 Bedroom, 4.00 Bathroom, 1,910 sqft

Residential on 0.07 Acres

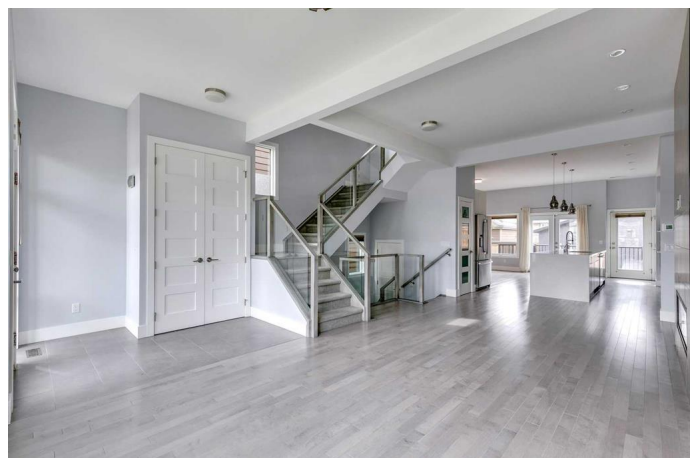
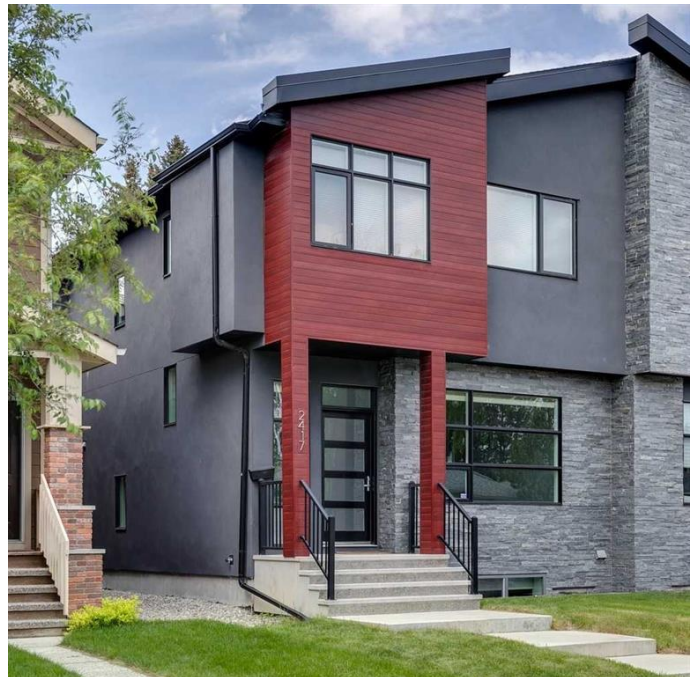
Banff Trail, Calgary, Alberta

Discover this meticulously maintained 2016-built home in Banff Trail.

Premium custom finishes welcome you from moment you step foot into the spacious foyer and flow seamlessly across the maple flooring which spans both the main and upper floors. With an exceptional layout, the great room faces the front, accompanied by a cozy lounge equipped with a gas fireplace and the kitchen and dining room in the rear of the home overlooking the private backyard. The gourmet kitchen elevates daily living with high-end appliances, modern dual-tone cabinetry, a reverse osmosis drinking water system, and a full-size pantry – a rare luxury in inner-city infills.

Upstairs you'll find a stunning primary suite with custom king-bed nook and spa-like ensuite featuring a soaker tub and romantic double-sided fireplace. Two more generously sized bedrooms with custom built-ins in every closet, a four piece bath and laundry room complete the upper level.

The bright basement maximizes livability with high ceilings, oversized windows, a fourth bedroom and third full bathroom – the perfect retreat for guests or older children. Well-maintained mechanicals include a water softener and radon mitigation system. Outside, the southwest-facing composite deck captures endless summer sunshine.



Banff Trail is an established community offering easy access to downtown with a quick 5 minute walk to the LRT Station. It's an amazing location for those who commute to The University of Calgary, SAIT, ACAD, and The Foothills Hospital. The walkability of the neighbourhood is excellent with nearby cafes, Confederation Park and a playground and Community Association only one block away. This turn-key sanctuary delivers the sophisticated lifestyle discerning buyers expect in one of Calgary's most vibrant communities.

Built in 2016

Essential Information

| | |
|----------------|------------------------|
| MLS® # | A2228522 |
| Price | \$939,900 |
| Bedrooms | 4 |
| Bathrooms | 4.00 |
| Full Baths | 3 |
| Half Baths | 1 |
| Square Footage | 1,910 |
| Acres | 0.07 |
| Year Built | 2016 |
| Type | Residential |
| Sub-Type | Semi Detached |
| Style | 2 Storey, Side by Side |
| Status | Active |

Community Information

| | |
|-------------|-------------------|
| Address | 2417 22 Street Nw |
| Subdivision | Banff Trail |
| City | Calgary |
| County | Calgary |
| Province | Alberta |
| Postal Code | T2M 3W7 |

Amenities

| | |
|----------------|--------------------------------------|
| Parking Spaces | 2 |
| Parking | Alley Access, Double Garage Detached |
| # of Garages | 2 |

Interior

| | |
|-------------------|---|
| Interior Features | No Animal Home, No Smoking Home |
| Appliances | Dishwasher, Dryer, Gas Stove, Microwave, Range Hood, Refrigerator, Washer, Window Coverings, Oven, Water Softener |
| Heating | Forced Air, In Floor |
| Cooling | Central Air |
| Fireplace | Yes |
| # of Fireplaces | 2 |
| Fireplaces | Gas |
| Has Basement | Yes |
| Basement | Finished, Full |

Exterior

| | |
|-------------------|---|
| Exterior Features | BBQ gas line, Private Yard |
| Lot Description | Back Lane, Landscaped, Rectangular Lot, Lawn |
| Roof | Asphalt Shingle |
| Construction | Concrete, Metal Siding, Stone, Wood Frame, Stucco |
| Foundation | Poured Concrete |

Additional Information

| | |
|----------------|-----------------|
| Date Listed | June 12th, 2025 |
| Days on Market | 39 |
| Zoning | R-CG |

Listing Details

| | |
|----------------|---------|
| Listing Office | Charles |
|----------------|---------|

Data is supplied by Pillar 9â„¢ MLSÂ® System. Pillar 9â„¢ is the owner of the copyright in its MLSÂ® System. Data is deemed reliable but is not guaranteed accurate by Pillar 9â„¢. The trademarks MLSÂ®, Multiple Listing ServiceÂ® and the associated logos are owned by The Canadian Real Estate Association (CREA) and identify the quality of services provided by real estate professionals who are members of CREA. Used under license.