

\$1,199,990 - 351 Waterford Grove, Chestermere

MLS® #A2222574

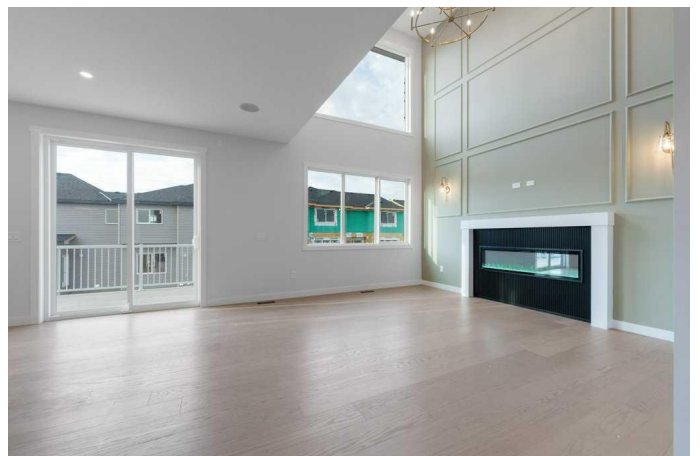
\$1,199,990

5 Bedroom, 4.00 Bathroom, 3,126 sqft

Residential on 0.12 Acres

NONE, Chestermere, Alberta

This remarkable semi-estate property offers an exceptional blend of luxury, space, and functionality, designed to impress from the moment you arrive. Situated on a conventional lot, the home boasts a triple car garage and features 9-foot ceilings on all three levels, enhancing the sense of openness and sophistication throughout. As you step inside, you're greeted by a dramatic open-to-below foyer with custom feature walls that set the tone for the elegance found across the home. The main floor is thoughtfully designed with a full bedroom and full bathroom, perfect for guests or multi-generational living. A large living area centers around a beautiful gas fireplace with built-in features, while a spice kitchen adds functionality and convenience. The heart of the home is the gourmet kitchen, complete with built-in appliances and a massive island – an ideal space for entertaining and culinary creativity. Upstairs, you'll find two spacious primary bedrooms. The main primary suite offers a luxurious 6-piece ensuite and a generous walk-in closet, while the second primary features its own elegant 5-piece ensuite. Two additional bedrooms share a third bathroom and are complemented by a huge bonus area, perfect for a media room or play space. A conveniently located laundry room completes the upper floor. The walkout basement is filled with natural light, thanks to oversized windows, and presents endless opportunities for future development – whether you're envisioning a



huge recreational area, home gym, or entertainment area. With its thoughtful layout, upscale finishes, and room to grow, this home truly offers a lot to explore and even more to love.

Built in 2025

Essential Information

MLS® #	A2222574
Price	\$1,199,990
Bedrooms	5
Bathrooms	4.00
Full Baths	4
Square Footage	3,126
Acres	0.12
Year Built	2025
Type	Residential
Sub-Type	Detached
Style	2 Storey
Status	Active

Community Information

Address	351 Waterford Grove
Subdivision	NONE
City	Chestermere
County	Chestermere
Province	Alberta
Postal Code	T1X 2T9

Amenities

Parking Spaces	6
Parking	Off Street, Triple Garage Attached
# of Garages	3

Interior

Interior Features	Bathroom Rough-in, Built-in Features, Chandelier, Closet Organizers, Double Vanity, French Door, Granite Counters, High Ceilings, Kitchen Island, No Animal Home, No Smoking Home, Open Floorplan, Pantry,
-------------------	--

	Separate Entrance, Vinyl Windows
Appliances	Dishwasher, Dryer, Electric Cooktop, Garage Control(s), Gas Stove, Microwave, Range Hood, Refrigerator, Stove(s), Washer
Heating	Forced Air
Cooling	None
Fireplace	Yes
# of Fireplaces	1
Fireplaces	Electric
Has Basement	Yes
Basement	Full, Unfinished, Walk-Out

Exterior

Exterior Features	None
Lot Description	Back Yard, Rectangular Lot
Roof	Asphalt Shingle
Construction	Stone, Vinyl Siding, Wood Frame
Foundation	Poured Concrete

Additional Information

Date Listed	May 20th, 2025
Days on Market	29
Zoning	R-1

Listing Details

Listing Office	PREP Realty
----------------	-------------

Data is supplied by Pillar 9â„¢ MLS® System. Pillar 9â„¢ is the owner of the copyright in its MLS® System. Data is deemed reliable but is not guaranteed accurate by Pillar 9â„¢. The trademarks MLS®, Multiple Listing Service® and the associated logos are owned by The Canadian Real Estate Association (CREA) and identify the quality of services provided by real estate professionals who are members of CREA. Used under license.