

# \$659,000 - 21290 Sheriff King Street Sw, Calgary

MLS® #A2195731

**\$659,000**

4 Bedroom, 4.00 Bathroom, 1,663 sqft

Residential on 0.06 Acres

Pine Creek, Calgary, Alberta

Introducing the brand-new Wicklow model by Brookfield Residential—a beautifully designed half duplex featuring an upper unit and a Legal basement, making it an exceptional opportunity for investors or homeowners.

The upper level offers three spacious bedrooms, 2.5 bathrooms, full laundry, a bright and inviting family room, and a versatile bonus room, perfect for additional living space or a home office.

The legal basement is thoughtfully designed with nine-foot ceilings, large windows, and high-end finishes, including designer tiles, wide plank flooring, and LED pot lights. With its private entrance, this basement provides a fantastic income opportunity or extended living space.

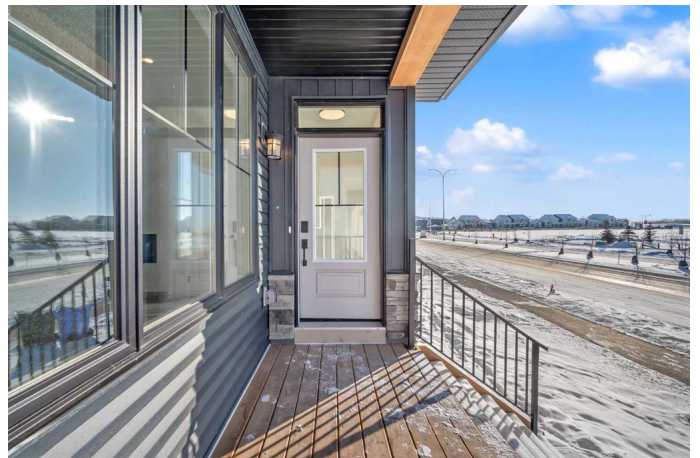
Located in the thriving Creekstone community in Pine Creek, this home is just steps from beautiful greenspaces, upcoming amenities, and exciting new developments. Don't miss this chance to own a modern, investment-ready property in one of the city's most sought-after neighborhoods!

Built in 2025

## Essential Information

MLS® #                   A2195731

Price                     \$659,000



Bedrooms	4
Bathrooms	4.00
Full Baths	3
Half Baths	1
Square Footage	1,663
Acres	0.06
Year Built	2025
Type	Residential
Sub-Type	Semi Detached
Style	2 Storey, Side by Side
Status	Active

### Community Information

Address	21290 Sheriff King Street Sw
Subdivision	Pine Creek
City	Calgary
County	Calgary
Province	Alberta
Postal Code	T2X 5G7

### Amenities

Parking Spaces	2
Parking	Parking Pad

### Interior

Interior Features	Chandelier, Kitchen Island, Pantry, Quartz Counters, Separate Entrance, Walk-In Closet(s)
Appliances	Dishwasher, Dryer, Microwave, Microwave Hood Fan, Range Hood, Refrigerator, Washer, Window Coverings, Washer/Dryer Stacked
Heating	Forced Air
Cooling	None
Fireplace	Yes
# of Fireplaces	1
Fireplaces	Electric
Has Basement	Yes
Basement	Finished, Full, Suite, Exterior Entry

### Exterior

Exterior Features	None
-------------------	------

Lot Description	Back Lane
Roof	Asphalt Shingle
Construction	Vinyl Siding, Wood Frame
Foundation	Poured Concrete

### **Additional Information**

Date Listed	February 19th, 2025
Days on Market	82
Zoning	R-Gm

### **Listing Details**

Listing Office	Real Broker
----------------	-------------

Data is supplied by Pillar 9â„¢ MLS® System. Pillar 9â„¢ is the owner of the copyright in its MLS® System. Data is deemed reliable but is not guaranteed accurate by Pillar 9â„¢. The trademarks MLS®, Multiple Listing Service® and the associated logos are owned by The Canadian Real Estate Association (CREA) and identify the quality of services provided by real estate professionals who are members of CREA. Used under license.